

VAYA CON DIOS

(QUE DIEU PENSE A TOI)

Paroles Françaises de
Henri CONTET

Arrangement de
Johnny WARRINGTON
Paroles Anglaises et Musique de
Larry RUSSELL
Inez JAMES et Buddy PEPPER

1st Bb Trumpet

Moderate Waltz Tempo

2 1st Bb Trumpet

VAYA CON DIOS

(QUE DIEU PENSE A TOI)

3876

Paroles Françaises de
 Henri CONTET

Arrangement de
 Johnny WARRINGTON

Paroles Anglaises et Musique de
 Larry RUSSELL

Inez JAMES et Buddy PEPPER

2nd Bb Trumpet

Moderate Waltz Tempo

A
 f mf

To Cup Mute Background

f

B To Cup Mute
 mf To Str. Mute Duet

Instr. or Vocal Background open
 Background

Soli
 f open softly mf Soli

2 2nd Bb Trumpet

To Harmon Mute

mf

Open Soli
 To CUP MUTE

f mf open

1. 2.
 f mf f mf f

VAYA CON DIOS

(QUE DIEU PENSE A TOI)

Paroles Françaises de
Henri CONTE

Arrangement de
Johnny WARRINGTON

Paroles Anglaises et Musique de
Larry RUSSELL
Inez JAMES et Buddy PEPPER

3rd Bb Trumpet

Moderate Waltz Tempo

Musical score for 3rd Bb Trumpet, left page. It consists of six systems of music. The first system starts with a treble clef, a key signature of one flat (Bb), and a 3/4 time signature. The tempo is 'Moderate Waltz Tempo'. The first system has a dynamic of *f* and a *mf* marking. A box labeled 'A' is placed above the first measure. The second system has a *Cup Mute* marking and a *Background* marking. The third system has a *f* dynamic. The fourth system has a *mf* dynamic and an *Open* marking. A box labeled 'B' is placed above the first measure, with the instruction 'To Cup Mute'. The fifth system has a *mf* dynamic and an *open* marking. The sixth system has a *Softly* marking, a *mf* dynamic, and a *Soli* marking. There are also some handwritten annotations like '4' and '2' in some measures.

Musical score for 3rd Bb Trumpet, right page. It consists of six systems of music. The first system has a *To Harmon Mute* marking and a *mf* dynamic. A box labeled 'C' is placed above the first measure. The second system has an *Open* marking. The third system has a *Soli* marking, a *mf* dynamic, and a *To Cup Mute* marking. A box labeled 'D' is placed above the first measure. The fourth system has a *f* dynamic and an *Open* marking. The fifth system has a *f* dynamic and an *Open* marking. The sixth system has a *f* dynamic and a *mf* dynamic. There are also some handwritten annotations like '1.' and '2.' in some measures.

VAYA CON DIOS

(QUE DIEU PENSE A TOI)

3876
Jazz
67/1/49

Paroles Françaises de
Henri CONTET

Arrangement de
Johnny WARRINGTON Larry RUSSELL
Inez JAMES et Buddy PEPPER

1st Trombone

Moderate Waltz Tempo

Musical score for 1st Trombone, left page. The score is written in 3/4 time and includes various performance instructions and dynamics. It features several systems of music with notes, rests, and articulation marks. Key instructions include 'To Cup Mute', 'Background', 'mf', 'Open', 'Soli', and 'softly'. There are also numerical markers '2', '4', and '1' indicating specific measures or sections.

Musical score for 1st Trombone, right page. This page continues the musical score from the left page. It includes performance instructions such as 'Background', '1st Trombone', 'mp', 'Soli', 'mf', 'To Cup Mute', and 'Open'. The score is written in 3/4 time and features various musical notations including notes, rests, and dynamics. Numerical markers '1' and '2' are present at the bottom of the page.

E.P.T. A.E. **VAYA CON DIOS** (QUE DIEU PENSE A TOI)
 MOYΣIKH BIBAIOSHKH
 Ap. Eicay. 1732

Paroles Françaises de **Henri CONTET**
 Arrangement de **Johnny WARRINGTON**
 Paroles Anglaises et Musique de **Larry RUSSELL**
Inez JAMES et Buddy PEPPER

2nd Trombone

Moderate Waltz Tempo

f *mf*
A *To Cup Mute* *Background*
f
B *To Cup Mute* *Open* **2**
Instr. or Vocal Background *Open* *Soli* **4** *f*
Softly *mf* *Soli*

2nd Trombone

Background *mp*
Soli **D** *mf* *To Cup Mute*
f *mf* *Open*
1 **2.** *f* *mf* *f*

VAYA CON DIOS

(QUE DIEU PENSE A TOI)

3876
Jazz
6/11/47

Paroles Françaises de
Henri CONTET

Arrangement de
Johnny WARRINGTON

Paroles Anglaises et Musique de
Larry RUSSELL
Inez JAMES et Buddy PEPPER

1st E^b Alto Saxophone

Moderate Waltz Tempo

Instr. or Vocal Background

mf

Bring out

f *mf*

Soli *Background (Softly)*

Background

f *Soli*

mf *f* *mf* *Soli*

1st E^b Alto Saxophone

Background

Background

Background

Soli

f *mf*

1. f *mf* *mf* *mf* *f*

2.

E.P.T. A.E. MOYSIKH BYBΛIOΘΗKH Ap. Eicay. 1232

VAYA CON DIOS

(QUE DIEU PENSE A TOI)

E.I.P.

Paroles Françaises de Henri CONDET

Arrangement de Johnny WARRINGTON

Paroles Anglaises et Musique de Larry RUSSELL Inez JAMES et Buddy PEPPER

2nd E^b Alto Saxophone

2nd E^b Alto Saxophone
Moderate Waltz Tempo

f **mf**

A *Instr. or Vocal Background* **mf**

Bring out **f** **mf**

Soli **B** *Background, softly*

Background **f** *Soli*

Soli **mf** **f** **mf**

C *Background*

D *Background* *Soli*

f **mf**

1. *Soli* **mf** **2.** **f**

VAYA CON DIOS

(QUE DIEU PENSE A TOI)

E. I. F.
3876
652
671/2p

Paroles Françaises de
Henri CONTET

Arrangement de
Johnny WARRINGTON

Paroles Anglaises et Musique de
Larry RUSSELL
Inez JAMES et Buddy PEPPER

1st B^b Tenor Saxophone

Moderate Waltz Tempo

Bring out

A Instr. or Vocal Background

mf

Bring out

f

mf

Soli

Background Softly

Background

f soli

Soli

mf

f

mf

1st B^b Tenor Saxophone

Background

Background

Background

Soli

Soli

f

mf

1. f

Soli

2. mf

f

VAYA CON DIOS

(QUE DIEU PENSE A TOI)

Paroles Françaises de
Henri CONDET

Arrangement de
Johnny WARRINGTON
Paroles Anglaises et Musique de
Larry RUSSELL
Inez JAMES et Buddy PEPPER

2nd B^b Tenor Saxophone

Moderate Waltz Tempo

A Instr. or Vocal Background
mf

Bring out
f mf

Soli **B**
Background, Softly

Background
f Soli

Soli
mf f mf

2nd B^b Tenor Saxophone

C Background

D Background
Soli

1. 2.
f inf soli mf f

VAYA CON DIOS

(QUE DIEU PENSE A TOI)

3876
Jazz
8/14/42

Paroles Françaises de
Henri CONDET

Arrangement de
Johnny WARRINGTON

Paroles Anglaises et Musique de
Larry RUSSELL
Inez JAMES et Buddy PEPPER

5th Saxophone Eb Baritone

Moderate Waltz Tempo

A Instr. or Vocal Background

Bring out

Soli B

Background

Soli

2
5th Sax. Eb Baritone

D Background

Bring out

1. 2.

E.P.T.A.E.
 ΜΟΥΣΙΚΗ ΒΙΒΛΙΟΘΗΚΗ
 Ap. Etocv. 1731

VAYA CON DIOS

(QUE DIEU PENSE A TOI)

Paroles Françaises de
Henri CONTET

Arrangement de
Johnny WARRINGTON

Paroles Anglaises et Musique de
Larry RUSSELL
Inez JAMES et Buddy PEPPER

Guitar

Moderate Waltz Tempo

The sheet music is written for guitar in 3/4 time, marked 'Moderate Waltz Tempo'. It consists of 12 staves of music. The first staff is the treble clef line, and the subsequent staves are the bass clef line. The music is divided into sections A, B, C, and D. Section A starts with a forte (f) dynamic and includes chords like F, C, G7, and C. Section B includes chords like G9, Dm7, G9, B7, C, C7, Gm7, C7, F, and Em7. Section C includes chords like G7, Dm7, G7, Em7, G9, Dm7, G9, B7, C, C7, Gm7, C7, F, Gdim, and Gdim. Section D includes chords like Gm7, C9, C7(-9), F, Am7, D7, C, G, G, Am7, D9, D7(-9), G7, Dm7, G9, Dm7, B7, C, C7, Gm7, C7, F, and G7. The piece concludes with two endings: the first ending leads back to the beginning with chords C, A7, Ab7, and G7; the second ending concludes with chords C, Bb, Ab, Bb, and C. Dynamics range from forte (f) to mezzo-forte (mf).

S.P.T. A.E. VAYA CON DIOS

ΜΟΥΣΙΚΗ ΒΙΒΛΙΟΠΗΚΗ
 Αρ. Εισοδ. 1731

(QUE DIEU PENSE A TOI)

E. I. P.

Paroles françaises de **MOYSEIKH BIBAIOSHIKH** Paroles anglaises et Musique de
Henri CONTET **Larry RUSSELL, Inez JAMES & Buddy PEPPER**

Moderato Waltz Tempo

Do Do6 Sol7
 La nuit bleue sur l'ha-cien-da La nuit lé-gè-re
 Now the ha-ci-en-da's dark the town is sleep-ing

Ré m.7 Sol7 Do
 Et sou-dain mon-te la voix D'u-ne pri-è-re
 Now the time has come to part, the time for weep-ing

Do7 Fa Do Sol7
 "VA_YA CON DI-OS, mon a-mour Que Dieu pense
 VA_YA CON DI-OS my dar-ling, Va-ya con

Ré m.7 Sol7 Do Do6
 à toi, mon cœur C'est le chant brûlant d'émoi D'une âme en
 Di-os my love. Now the vil-lage mission bells are soft-ly

Sol7 Ré m.7 Sol7
 pei-ne Pour l'a-mant per-du là-bas Au fond des
 ring-ing if you list-en with your heart you'll hear them

Do Do7 Fa Do
 plai-nes; "VA_YA CON DI-OS, mon a-mour
 sing-ing VA_YA CON DI-OS my dar-ling.

Sol7 Ré m.7 Sol7 Do Sol m.7
 Que Dieu pense à toi, mon cœur Il va et c'est l'amour
 Va-ya con Di-os my love Where ev-er you may be

Do7 Fa Sol m.7
 qui l'ac-com-pa-gne Il sait qu'une a-mou-reu-se
 I'll be-be-side you, Al-though you're man-y mil-lion

Do7 Fa La m.7 Ré7
 prie là-bas Le ciel en-tend la voix de sa com-
 dreams a-way. Each night I'll say a pray'r a pray'r to

Sol La m.7 Ré7
 pa-gne Et l'om-bre dou-ce lui re-dit tout
 guide you to hast-en ev-'ry lone-ly hour of

Sol7 Ré m.7 Sol7 Do Do6
 bas: Ne tremble pas Dans le vent et ses fris-sons En long cor-
 ev-'ry lone-ly day Now the dawn is breaking through a gray to-

Sol7 Ré m.7 Sol7
 tè-ge Il é-cou-te la chan-son Qui le pro-
 mor-row But the mem-o-ries we share are there to

Do Do7 Fa Do
 tè-ge "VA_YA CON DI-OS, mon a-mour
 bor-row VA_YA CON DI-OS my dar-ling

Sol7 Ré m.7 Sol7 Do Do dim Ré m.7 Sol7 Do
 Que Dieu pense à toi, mon cœur Le vil-lage est en-dor-mi
 Va-ya con Di-os my love. Now the dawn is breaking through

Do6 Sol7 Ré m.7
 La lu-ne rê-ve Mais pour lui du fond des nuits
 a gray to-mor-row But the mem-o-ries we share

Sol7 Do Do7 Fa
 Un chant s'é-lè-ve: "VA_YA CON DI-OS, mon
 are there to bor-row VA_YA CON DI-OS my

Do Sol7 Ré m.7 Sol7 Do Ré m.7 Do
 a-mour Que Dieu pense à toi, mon cœur
 dar-ling Va-ya con Di-os my love.

Copyright 1953 by Ardmore Music Corp., 1730 Broadway, New York 19, N.Y.
 EDWIN H. MORRIS S.A.R.L. 86, Bd Haussmann, Paris (8^e) Tous droits réservés
 Pour le Continent Européen (sauf Scandinavie et Finlande) E.H.M. 166^{bis} pour tous pays

Atelier JOLIVET, Simill, Paris. E.H.M. 166 bis DILLARD & Cie, Imp. Paris

Piano 3

mf
 May God be with you my love ——— Where
 (Va - ya con Di - os)

ev - er you may be — I'll be be - side you, — Al -
mf

though you're man - y mil - lion dreams a - way. — Each

night I'll say a pray'r — a pray'r to guide you — to

hast - en ev - ry lone - ly hour of ev - ry lone - ly day Now the

Piano 4

dawn is break - ing through — a gray to - mor - row — But the

mem - o - ries we share — are there to bor - row —

f
 VA - YA CON DI - OS my dar - ling —

may God be with you my love. — Now the
 (Va - ya con Di - os)

love. — *mf* — *f*

E.P.T. A.E. VAYA CON DIOS

ΜΟΥΣΙΚΗ ΕΙΒΑΙΟΓΗΚΗ

Ap. Εισαγ. 1731

(QUE DIEU PENSE A TOI)

de Basso Ten

Paroles Françaises de
Henri CONTET

Arrangement de

Johnny WARRINGTON

Paroles Anglaises et Musique de

Larry RUSSELL

Imez JAMES et Buddy PEPPER

Violins A-B-C

Moderate Waltz Tempo

A-B

A

ha-ci-en-da's dark - the town is sleep-ing - Now the time has come to part.

C

OBEL.

Div.

- the time for weep-ing -

f VA-YA CON DI-OS my dar-ling

mf

May God be with you my love. - Now the

(Va-ya con Di-os)

Violins 2

B

vil-lage miss-ion bells - are soft-ly ring-ing - if you list-en with your heart

- you'll hear them sing-ing -

f VA-YA CON DI-OS my dar-ling

C

May God be with you my love - Where ev-er you may be I'll be be-

(Va-ya con Di-os)

Violins 3

-side you, Al-though you're man-y mil-lion dreams a-way.

Each night I'll say a pray'r a pray'r to guide you. to

hast-en ev-ry lone-ly hour of ev'ry lone-ly day Now the dawn is break-ing through.

Violins 4

- a gray to mor-row But the mem-o-ries we share-are there to

bor-row VA-YA CON DI-OS my dar-ling

may God be with you my love. Now the

f mf f

P.T. A.E. VAYA CON DIOS (QUE DIEU PENSE A TOI)

Paroles Françaises de Henri CONTET

Arrangement de Johnny WARRINGTON

Paroles Anglaises et Musique de Larry RUSSELL Inez JAMES et Buddy PEPPER

Bass

Moderate Waltz Tempo

Musical score for Bass, consisting of 12 staves of music with various dynamics (f, mf) and section markers (A, B, C, D).

E.P.T. A.E.
ΜΟΥΣΙΚΗ ΒΙΒΛΙΟΘΗΚΗ
Αρ. Εισαγ. 1234

VAYA CON DIOS

(QUE DIEU PENSE A TOI)

3876
Jazz
6/11/46

Paroles Françaises de
Henri CONTET

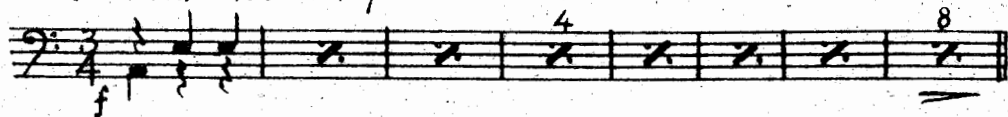
Arrangement de
Johnny WARRINGTON

Paroles Anglaises et Musique de
Larry RUSSELL

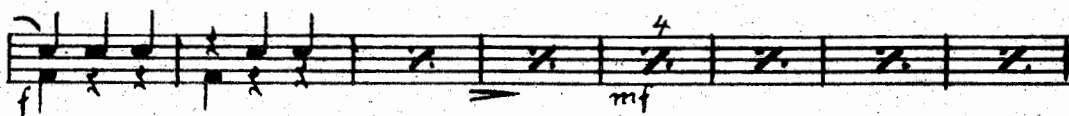
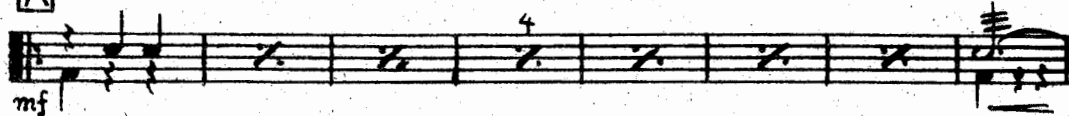
Inez JAMES et Buddy PEPPER

Drums

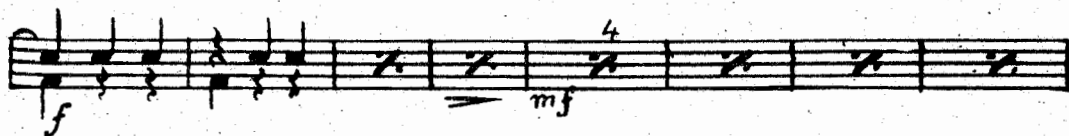
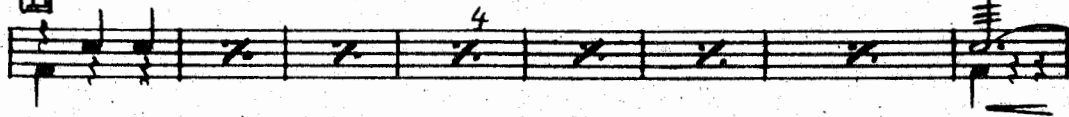
Moderate Waltz Tempo



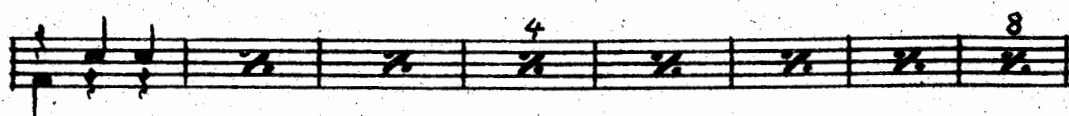
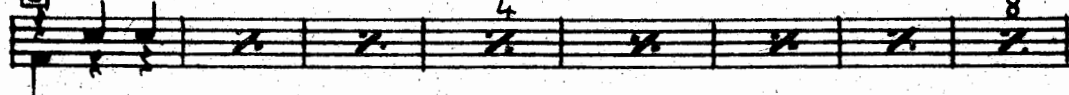
A



B



C



D

