

Flauto

А Е Р Е
МУЗЫКА ПИРАТОВ

S' А е в а

Handwritten musical notation for flute, first staff. The staff begins with a treble clef, a key signature of one sharp (F#), and a common time signature (C). The melody consists of eighth and sixteenth notes, many of which are beamed together and have slurs above them. The notation is written in a cursive, handwritten style.

Handwritten musical notation for flute, second staff. This staff continues the melodic line from the first staff, featuring similar rhythmic patterns and slurs. The handwriting is consistent with the first staff.

Handwritten musical notation for flute, third staff. This staff shows a change in texture, with many notes beamed together in a dense, rhythmic pattern. There are some rests and accents throughout the staff.

Handwritten musical notation for flute, fourth staff. This staff features a series of chords, many of which are beamed together. There are several accents (>) placed above the notes. The notation is dense and rhythmic.

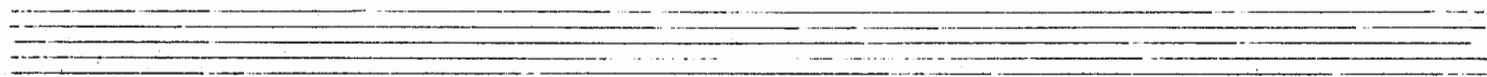
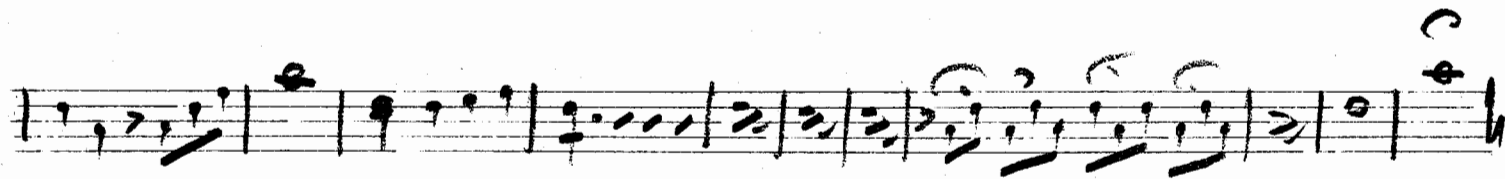
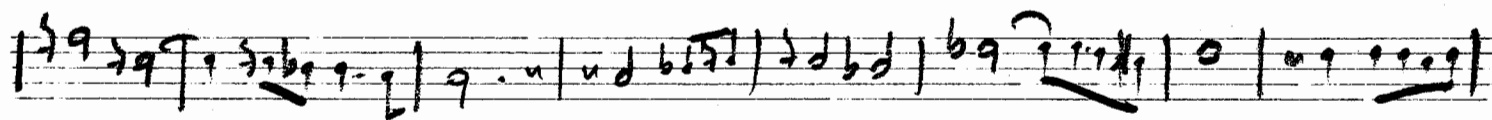
Handwritten musical notation for flute, fifth staff. This staff returns to a more melodic style with eighth and sixteenth notes, some beamed together. It includes slurs and accents, continuing the piece's development.

Handwritten musical notation for flute, sixth staff. This is the final staff on the page, showing a few final notes and rests. The word 'NO' is written above the first few notes. The notation is less dense than the previous staves.

Обοε

ΑΕΡ
ΜΟΥΣΙΚΗ ΒΙΒΛΙΟΘΗΚΗ

S' alba

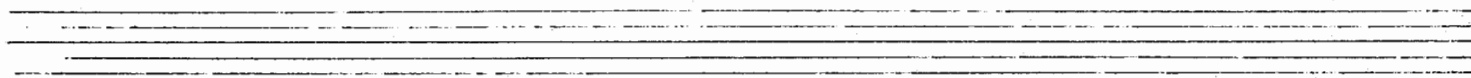
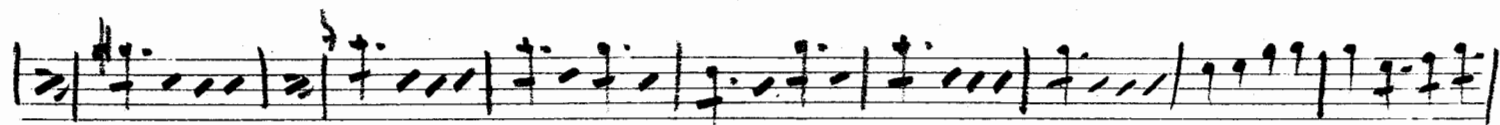
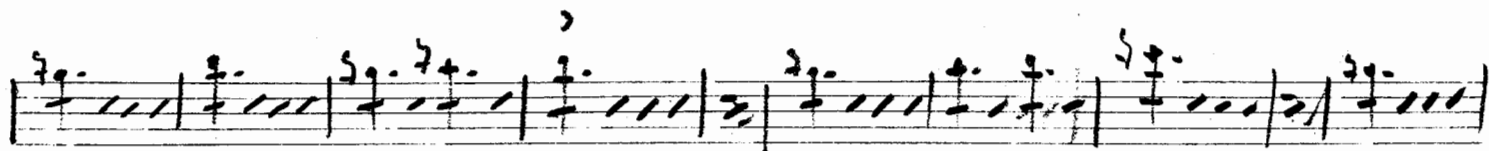
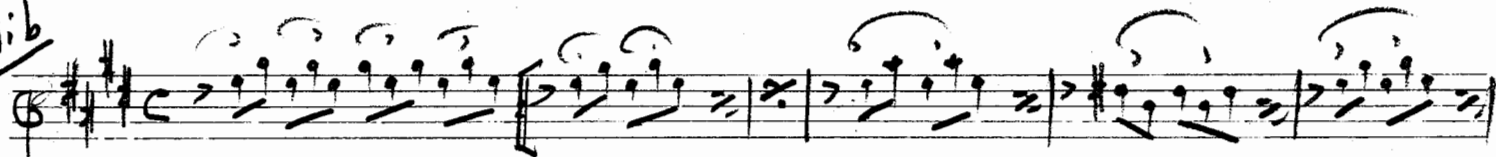


Clavino

Α Ε Ρ Λ
ΜΟΥΣΙΚΗ ΒΙΒΛΙΟΘΗΚΗ

Σ' ΑΛΛΑ

slb



αργα

Α Ε Φ Ε
ΜΟΥΣΙΚΗ ΠΡΟΒΑΙΟΘΗΚΗ

9' αλτα

Fa M

The image shows a handwritten musical score for a piece titled "αργα" (slowly) in 9/8 time. The score is written on two systems of staves. The first system consists of two staves, and the second system also consists of two staves. The notation includes various note values, rests, and dynamic markings. The key signature is one sharp (F#), and the time signature is 9/8. The score is written in a cursive, handwritten style. The first system ends with a double bar line and a fermata. The second system begins with a double bar line and a fermata, followed by a measure with a "1" above it, indicating a first ending. The score concludes with a double bar line and a fermata.

1 violino A

А. П. П.
МУЗЫКА - БИРНОУКА

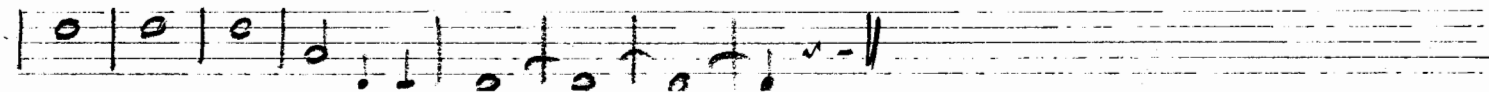
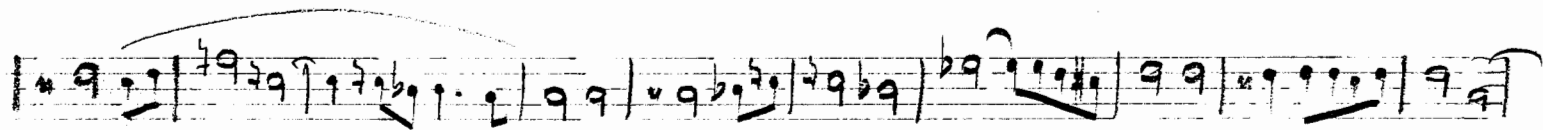
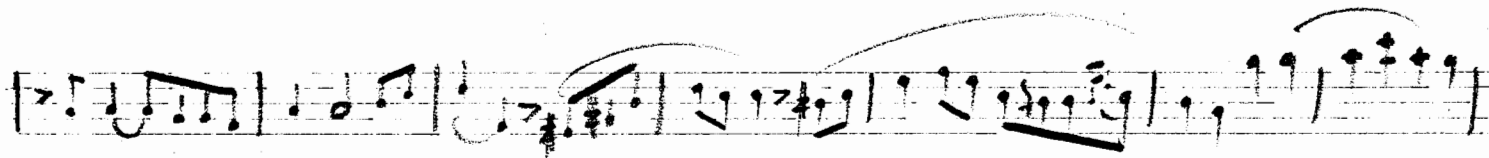
3' alba

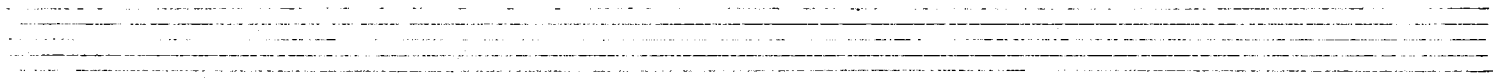
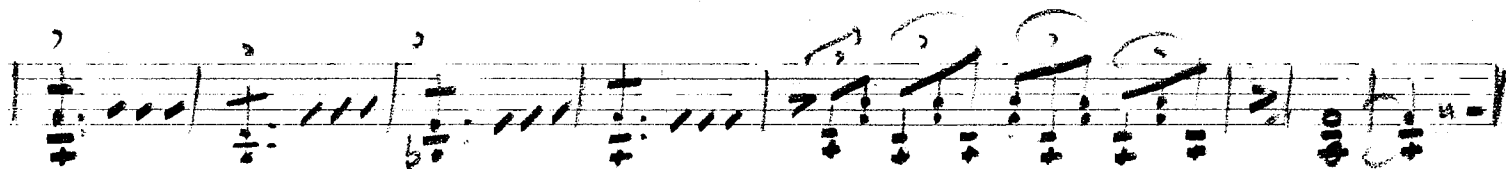
Handwritten musical score for Violin I, titled "3' alba". The score consists of six staves of music. The first staff begins with a treble clef, a key signature of one sharp (F#), and a common time signature (C). The music is written in a single system with various note values, rests, and slurs. The second staff continues the melodic line with some grace notes. The third staff features a more complex melodic passage with slurs. The fourth and fifth staves are dominated by dense, multi-measure rests, indicating long sustained notes or chords. The sixth staff concludes the piece with a final melodic phrase and a double bar line.

1 Violino B

AD PE
SOPRA

Allegro

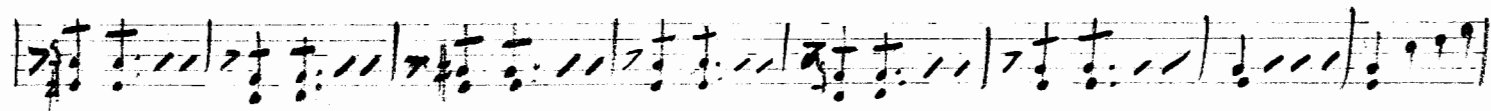
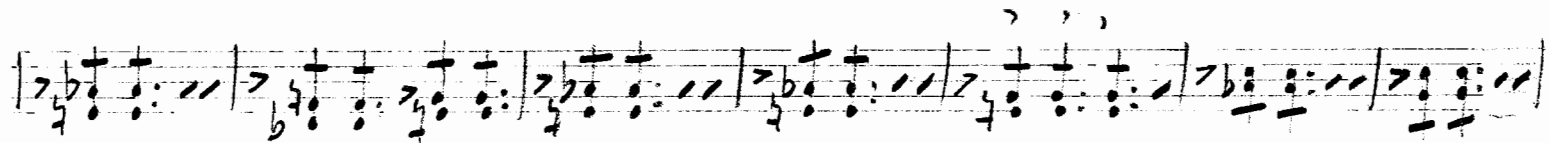
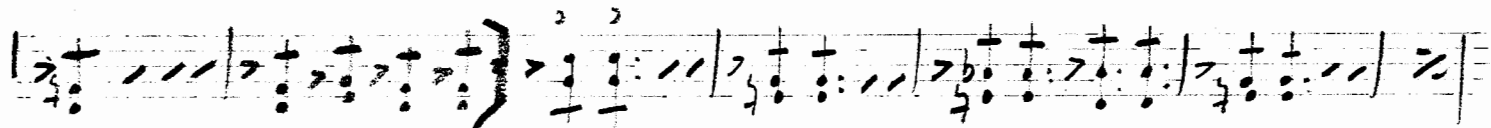
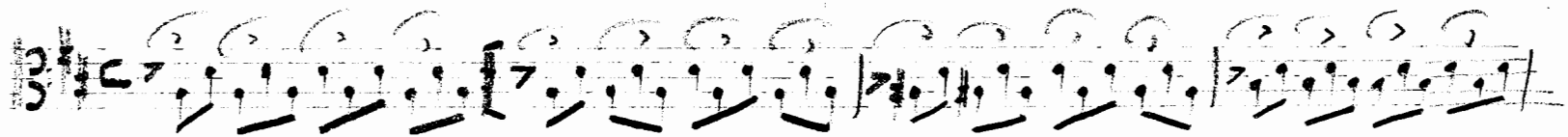




Viola

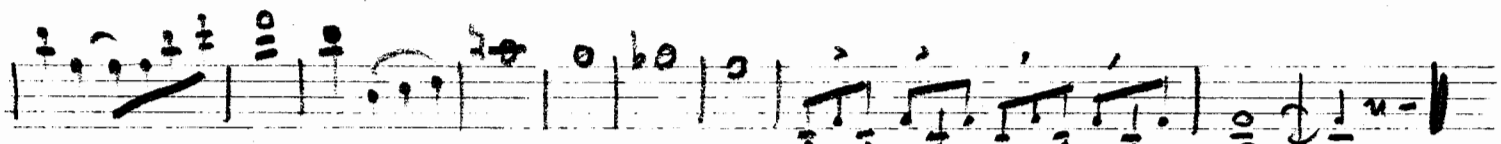
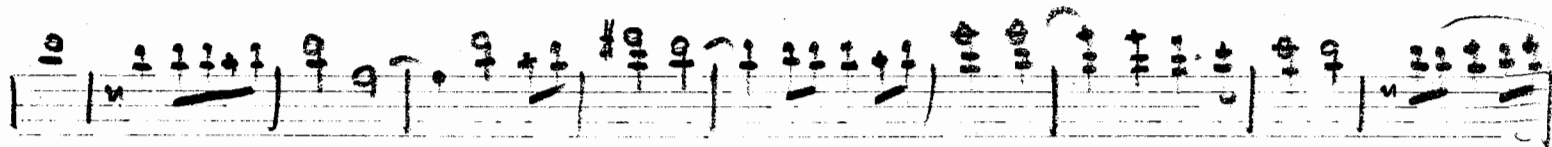
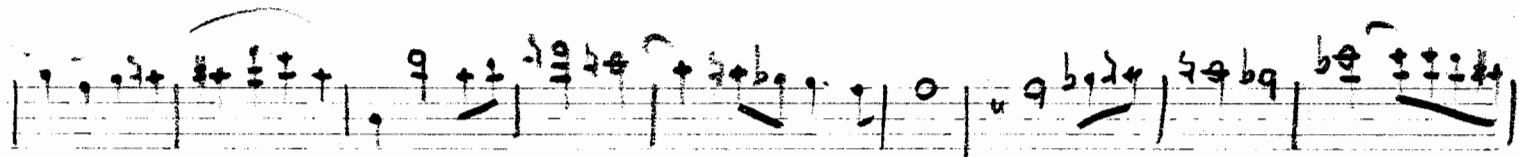
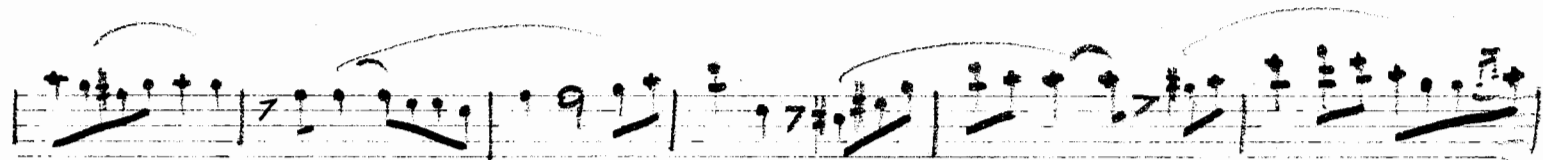
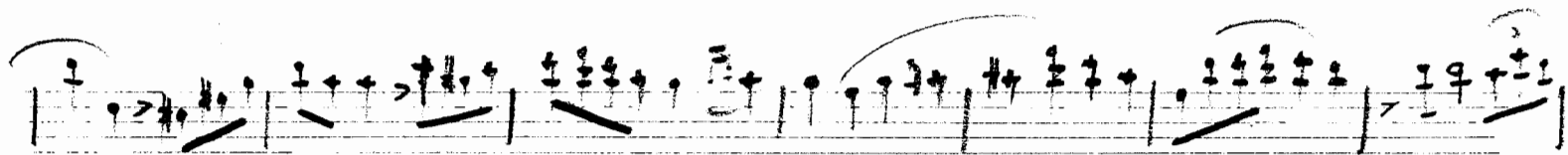
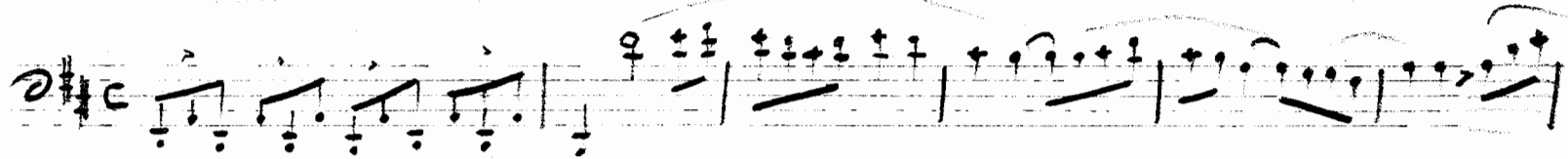
2 P E
MOTENI BIAVORHKH

f' alla



Cello

S' alba



C. Bano

L' alba

