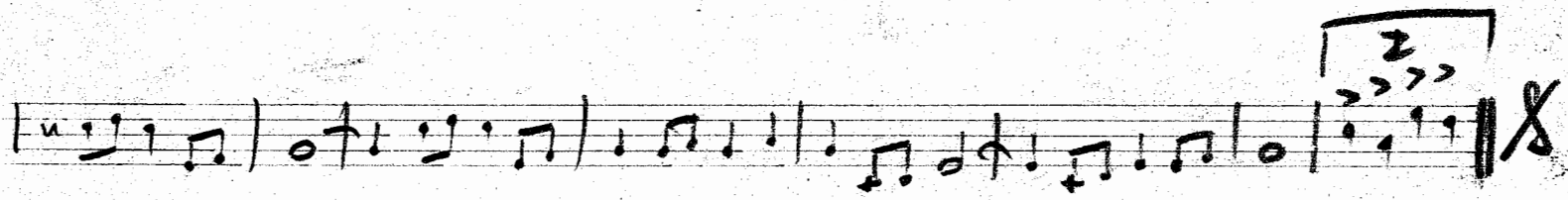
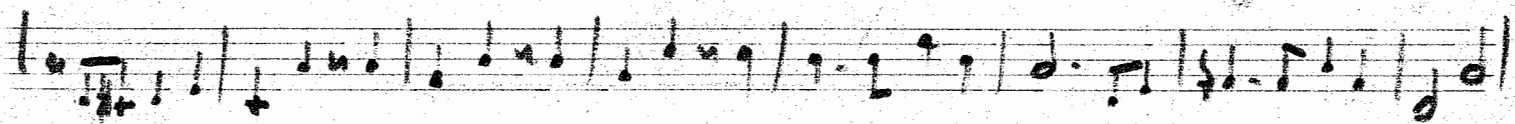
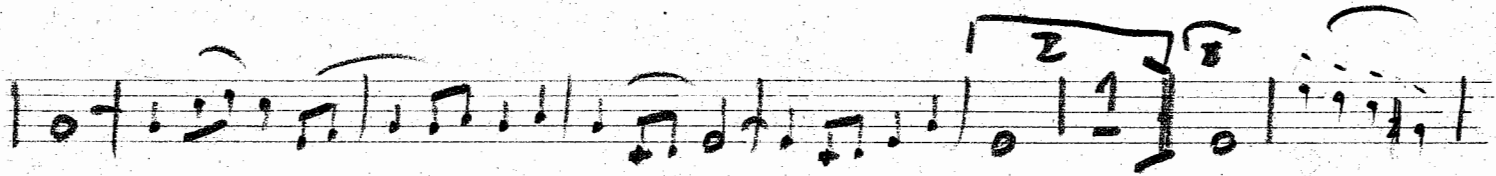
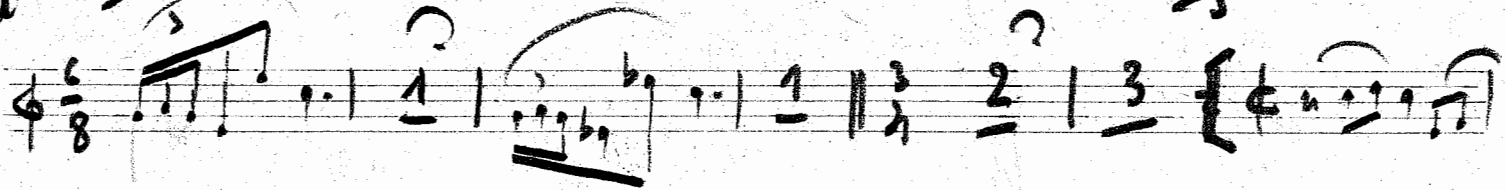


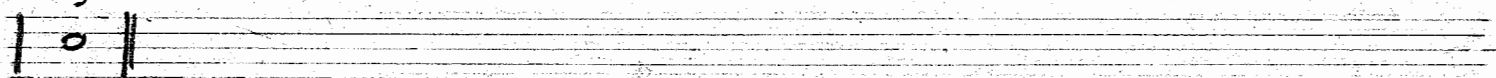
Hand
Solo
Hand

Α Ε Ρ Ε
ΜΟΥΣΙΚΗ ΒΙΒΛΙΟΘΗΚΗ

Sourini



Hand



E.P.T. A.E.
ΜΟΥΣΙΚΗ ΒΙΒΛΙΟΘΗΚΗ
Αρ. Εισαγ. 9612B

Arpa

Sowire

N 3

Handwritten musical notation for the first system, consisting of two staves. The top staff begins with a treble clef, a key signature of two flats (Bb and Eb), and a 6/8 time signature. The bottom staff begins with a bass clef and a 6/8 time signature. The notation includes various note values, rests, and dynamic markings such as 'p' and 'f'.

f

Handwritten musical notation for the second system, consisting of two staves. The notation includes various note values, rests, and dynamic markings such as 'p' and 'f'.

Handwritten musical notation for the third system, consisting of two staves. The notation includes various note values, rests, and dynamic markings such as 'p' and 'f'.

Handwritten musical notation for the fourth system, consisting of two staves. The notation includes various note values, rests, and dynamic markings such as 'p' and 'f'.

E.P.T. A.E.
ΜΟΥΣΙΚΗ ΒΙΒΛΙΟΘΗΚΗ
Αρ. Εισαγ. 9612B.

Five empty musical staves at the bottom of the page, arranged vertically.

2

1: Violino A

Sourire

Capoli

E.P.T. A.E.
 ΜΟΥΣΙΚΗ ΒΙΒΛΙΟΘΗΚΗ
 Ap. Etay. 9612B...

1: Violino B

Somire

Α Ε Ρ Ε
ΜΟΥΣΙΚΗ ΒΙΒΛΙΟΘΗΚΗ

Handwritten musical score for Violino B, titled "Somire". The score consists of five staves of music. The first staff begins with a treble clef, a key signature of two flats (B-flat and E-flat), and a 6/8 time signature. The music features various rhythmic values, including eighth and sixteenth notes, and rests. The second staff includes first and second endings. The third staff is marked "p12" and "arco". The fourth and fifth staves continue the melodic line with first and second endings. There are several handwritten annotations, including a large "X" at the top right and a question mark above a note in the first staff.

E.P.T. A.E.
ΜΟΥΣΙΚΗ ΒΙΒΛΙΟΘΗΚΗ
Αρ. Εισαγ. 3612 B

Violino 2:

Souris

3

Α Ε Ρ Ε
ΜΟΥΣΙΚΗ ΒΙΒΛΙΟΘΗΚΗ

E.P.T. A.E.
ΜΟΥΣΙΚΗ ΒΙΒΛΙΟΘΗΚΗ
Αρ. Εισαγ. 9612B

Viola

Sourire

Handwritten musical notation for the first staff, including a treble clef, a key signature of one flat (B-flat), and a time signature of 6/8. The notation features a series of notes with various articulations and dynamics, including a forte (*f*) dynamic marking.

Handwritten musical notation for the second staff, featuring a first ending bracket labeled 'I' and a second ending bracket labeled 'II'. The notation includes various note values and rests.

Handwritten musical notation for the third staff, starting with a dynamic marking of *pizz* (pizzicato) and ending with a dynamic marking of *arco* (arco). The notation includes various note values and rests.

Handwritten musical notation for the fourth staff, featuring various note values and rests, including a half note and a quarter note.

Handwritten musical notation for the fifth staff, including a first ending bracket labeled 'I', a forte (*f*) dynamic marking, and a key signature change to one sharp (F#).

E.P.T. A.E.
ΜΟΥΣΙΚΗ ΒΙΒΛΙΟΘΗΚΗ
Αρ. Εισαγ. ... 9612 B.

Cello

Soume

Α Ε Ρ Ε
ΜΟΥΣΙΚΗ ΒΙΒΛΙΟΘΗΚΗ

Handwritten musical notation for the first staff. It begins with a treble clef, a key signature of one flat (B-flat), and a time signature of 6/8. The notation includes various rhythmic values, accidentals, and dynamic markings such as *f* and *mf*. There are also some handwritten annotations above the notes, possibly indicating phrasing or performance instructions.

Handwritten musical notation for the second staff. It continues the melody with various note values and rests. There are some handwritten annotations above the notes, possibly indicating phrasing or performance instructions.

Handwritten musical notation for the third staff. It includes dynamic markings *piz* and *arw*. The notation continues the melodic line with various note values and rests.

Handwritten musical notation for the fourth staff. It continues the melodic line with various note values and rests.

Handwritten musical notation for the fifth staff. It includes dynamic markings *f* and *mf*. The notation continues the melodic line with various note values and rests.

E.P.T. A.E.
ΜΟΥΣΙΚΗ ΒΙΒΛΙΟΘΗΚΗ
Αρ. Εισαγ. 9612B...

C. Bano

Souris

Α Ε Ρ Ε
ΜΟΥΣΙΚΗ ΒΙΒΛΙΟΘΗΚΗ

E.P.T. A.E.
ΜΟΥΣΙΚΗ ΒΙΒΛΙΟΘΗΚΗ
Αρ. Εισαγ. ... 3612B