

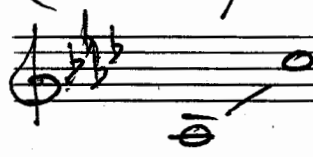
ΧΟΡΙΣΜΟΣ.

(Μυωδία)

Σ. Μ. ΑΛΜΙΑΝ

(Chorus)

(A. 6.)



Ε. Π. Τ. Α. Ε.
ΜΟΥΣΙΚΗ ΒΙΒΛΙΟΘΗΚΗ
Αρ. Εισαγ. 3102

Clarinete en sib I

Clarinete 2 2 II

Clarinete 2 2 III

SAX Tenor 2 2 I

Tiro (Solista) I

" II

Cello (solista) I

Batterie

Pianos

Basso. —

Trio vocale

Soprano I

2 Alto II

Chante (Alto.) III

XOPIZMOΣ.

Z.M. ANIAN

Andante

Handwritten musical score for various instruments and voice. The score is organized into staves for each instrument/voice part, with a common key signature of two flats and a common time signature.

- Clarinete I**: Melodic line with notes and rests.
- Clarinete II**: Melodic line, starting with a *p.* dynamic marking.
- Clarinete III**: Melodic line.
- Sax Tenor**: Melodic line.
- Tromba I**: Melodic line with a **Solo** box around the notes in the third measure.
- Trompette**: Melodic line.
- Trio I-II**: Chordal accompaniment.
- Trio III**: Chordal accompaniment.
- Vocale**: Vocal line with lyrics.
- Chante**: Vocal line.
- Cello**: Chordal accompaniment.
- Batterie**: Drum part.
- Piano**: Chordal accompaniment with *p.* dynamic marking.
- Bass**: Chordal accompaniment.

piz