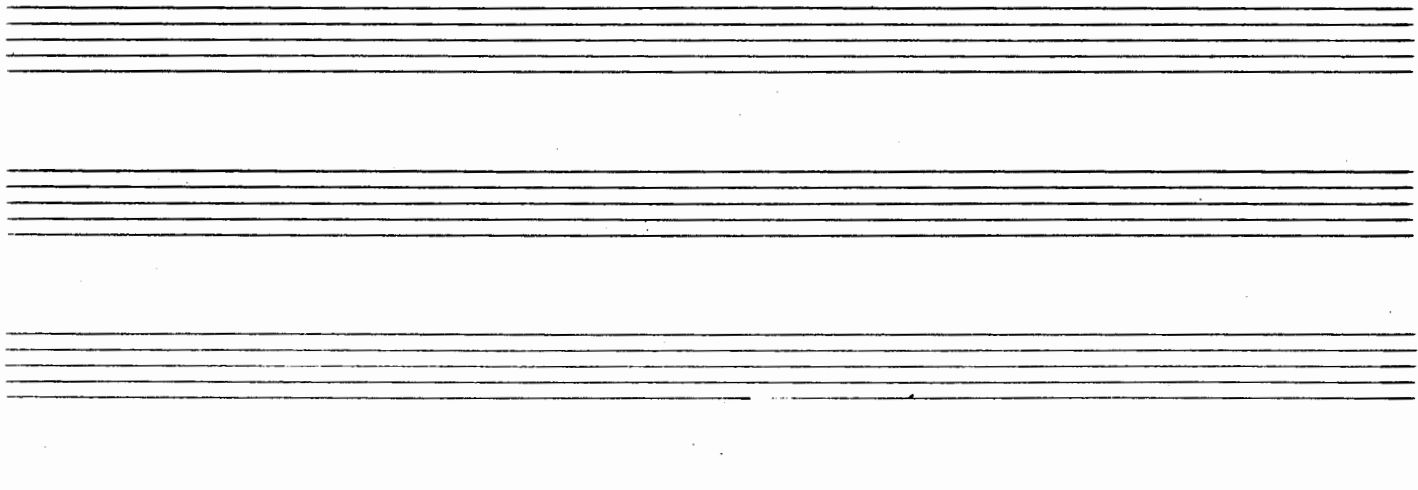


PARTITURA



ΑΛΕΚΟΥ ΠΑΝΑΓΙΩΤΟΠΟΥΛΟΥ

ΔΕΝ ΣΕ ΞΕΧΝΩ

ΔΙΑΣΚΕΥΗ:

Ε. Π. Β.

ΕΝΟΡΧΗΣΤΡΟΣΙΣ:

ΚΩΣΤΑ ΓΙΑΝΝΙΔΗ

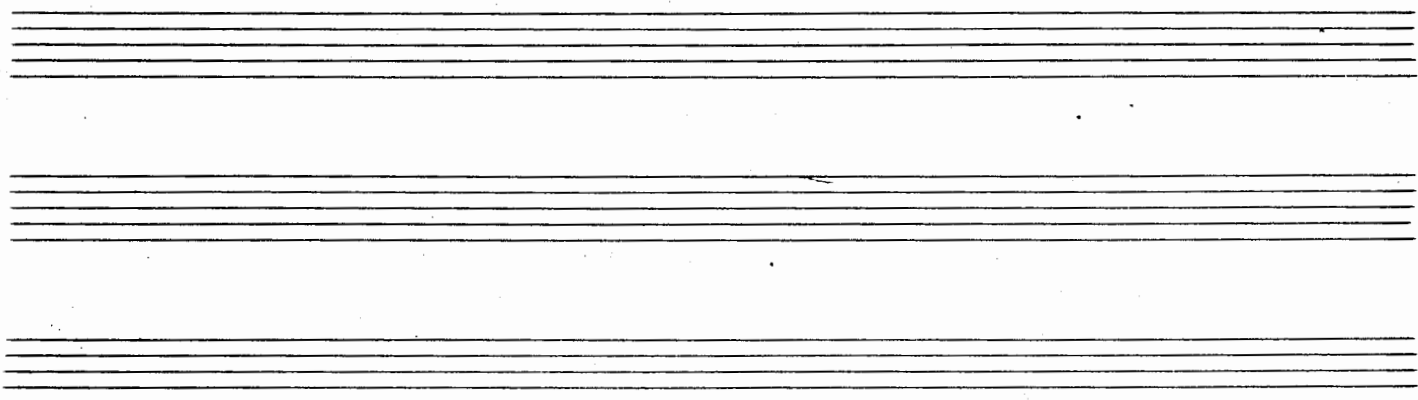
3841
807.6270.
156 d.d.

ΑΡΗ ΣΜΥΡΝΑΙΟΥ



ISTRUMENTI

1 FLAUTO
2 CLARINI (1.2)
1 SAX-TENDRE
2 TROMBE Sib(1.2)
1 TROMBONE
BATTERIA
PIANO
1 VOCE
6 VIOLINI (1.2.3)
1 V. CELLO
1 C. BASSO



ΔΕΝ ΣΕ ΞΕΧΝΩ

T^o di Tango

FLAUTO

CLARINI 1. 2

SAX. TEN.

TROMBE 1. 2

TROMBONE

BATTERIA

PIANO

VOCE

VIOLINI 1. 2. 3

VICELLO

C. BASSO

CON SORDI

TAMB.

pp

mf

pp

DIV.

uno

DIV.