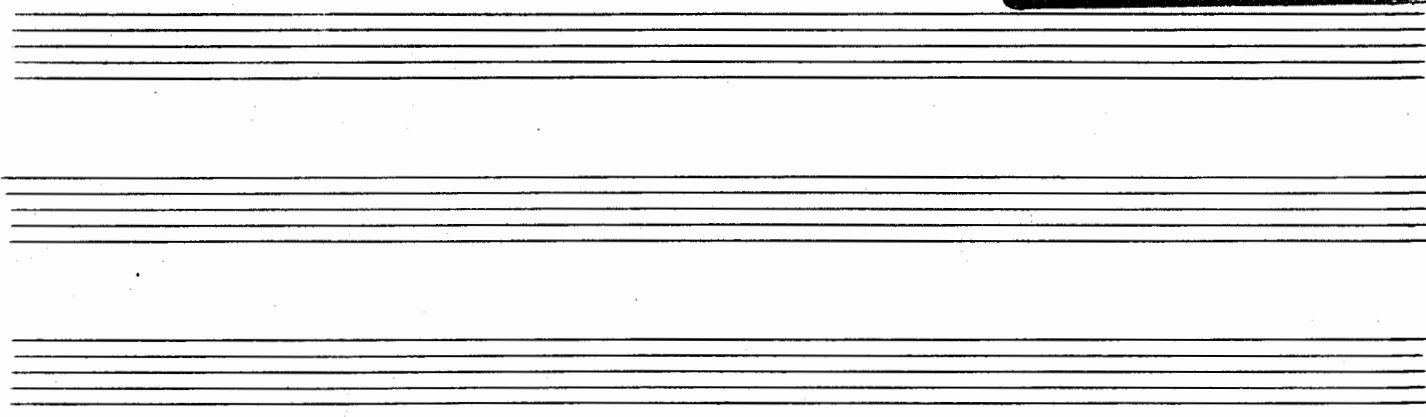


PARTITION



ΤΑΚΗ ΜΕΡΑΚΗ

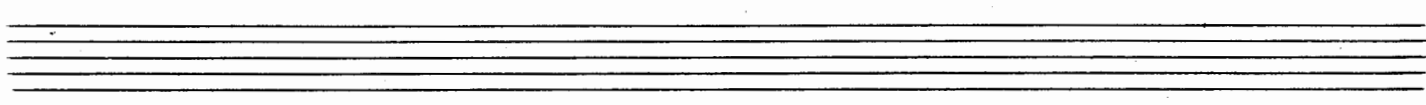
ΜΕΡΗ ΟΡΧΗΣΤΡΑΣ:

// Η ΖΩΗ ΜΟΥ ΓΕΛΑ
ΚΟΝΤΑ ΣΕ ΣΕΝΑ //

1^η DO

ΚΑΙ

1^η LA



ΔΙΑΣΚΕΥΗ:

ΕΝΟΡΧΗΣΤΡΟΣΙΣ:

ΚΟΣΤΑ ΓΙΑΝΝΙΔΗ

ΑΚΗ ΣΜΥΡΝΑΙΟΥ

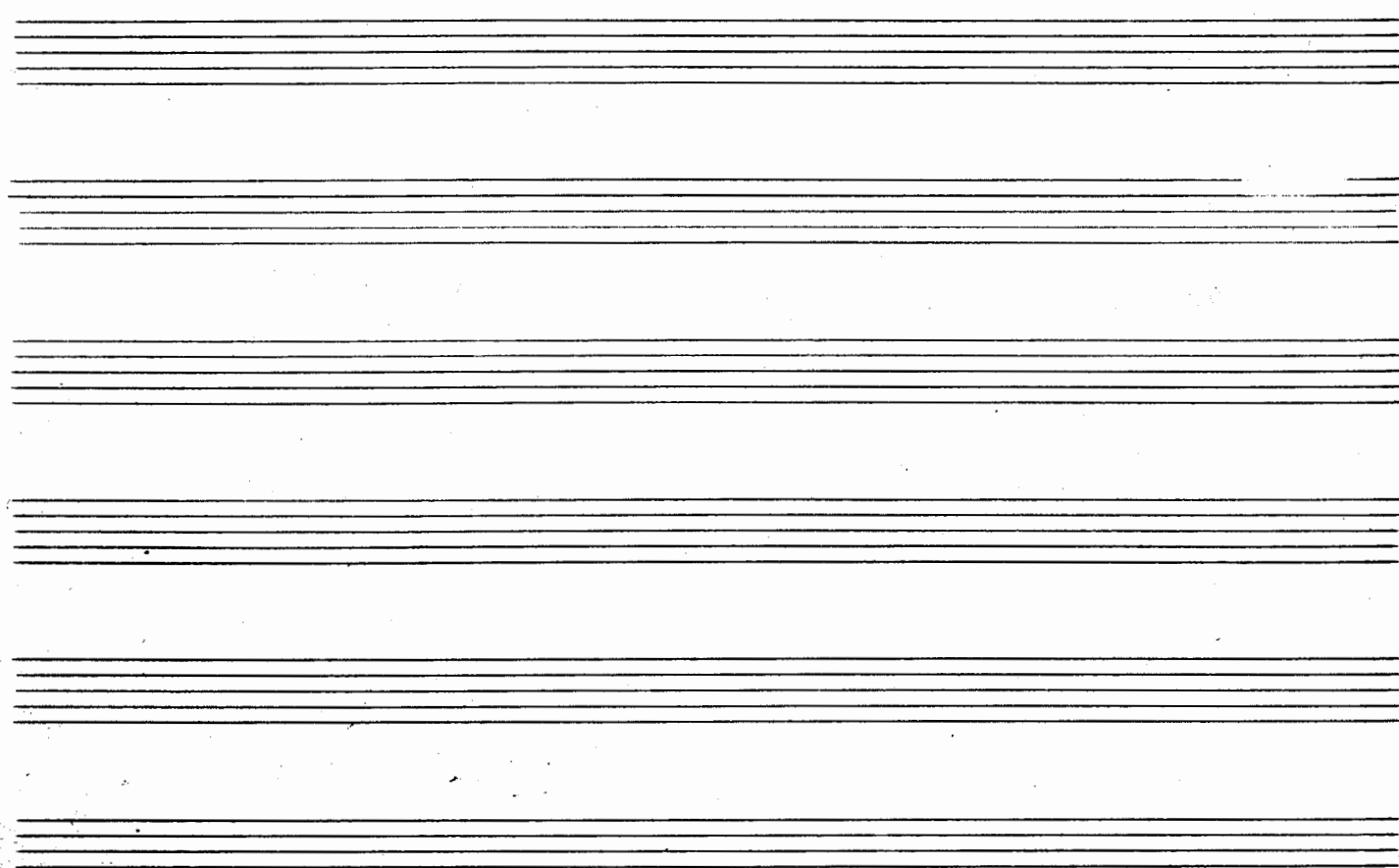
Ε. Π. Π.

ΜΟΥΣΙΚΗ ΒΙΒΛΙΟΘΗΚΗ

Λογ. Μητρώο 583

Λογ. Βιβλίου 622-6220

Λογ. Συνόλων -150 δι. δι. -



Η ΖΩΗ ΜΟΥ ΓΕΛΑ

Flauto

Clarinetti
I - II - III
(cl. 1-2)

Bras (m. Do)

Violini
I - II - III
Div. a 2 (Viol. 1mi)
(Viol. 2-3)

Violoncello

C. Basso

PIANO

This system contains the first six staves of the score. The Flauto part has a melodic line with some accidentals. The Clarinetti part is marked with 'cl. 1-2' and has a complex rhythmic pattern. The Bras part has a few notes with a 'Sordina (fine)' marking. The Violini part is divided into two groups: 'Viol. 1mi' and 'Viol. 2-3'. The Violoncello and C. Basso parts have a steady, rhythmic accompaniment. The PIANO part provides harmonic support with chords and single notes.

Fl.

cl.

Bz.

V.

VC.
CB.

Piano

This system contains the next six staves of the score. The Fl. part continues the melodic line. The cl. part has a more active role with many notes. The Bz. part has a dense texture with many notes. The V. part has a complex texture with many notes. The VC./CB. part has a steady, rhythmic accompaniment. The Piano part provides harmonic support with chords and single notes.