

ΚΟΣΤΑ ΓΙΑΝΝΙΔΗ

ΛΕΣ ΚΑΙ ΔΕΝ ΕΙΝΙ ΑΛΗΘΕΙΑ

51m

ΔΙΑΣΚΕΥΗ 7 ΕΝΟΡΧΗΣΤΡΟΣΙΣ :

ΑΚΗ ΣΜΥΡΝΑΙΟΥ

ΜΟΥΣΙΚΗ ΒΙΒΛΙΟΘΗΚΗ

Άγιου Μηνάου 2817

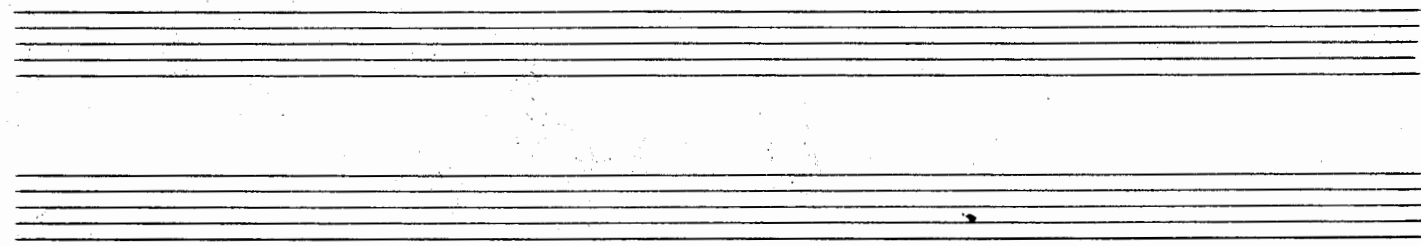
Παλιόριον 111 Σοφιάς

Τηλ: 210 3711111 194 11 11

ISTRUMENTI

- ✓ 1 FLAUTO
- ✓ 3 CLARINI (1.2.3)
- ✓ 2 TROMBE (1.2)
- ✓ 1 TROMBONE
- ✓ BATTERIA
- ✓ PIANO
- ✓ 6 VIOLINI (1.2.3)
- ✓ 1 V.CELLO
- ✓ 1 C. BASSO
- ✓ 1 VOCE

52 m/ea



ΛΕΣ ΚΑΙ ΔΕΝ ΕΙΝ' ΑΛΗΘΕΙΑ

FLAUTO

CLARINI
1. 2.

3

TROMBE
1. 2.

TROMBONE

BATTERIA.
TAMB.

PIANO

VOCE

V. VIOLINI
1. 2. 3.

V. CELLO

C. BASSO

The score is written on ten staves. The top staff is for Flauto (Flute), followed by Clarini (Clarinets) numbered 1 and 2, a third staff for a third clarinet, Trombe (Trumpets) numbered 1 and 2, Trombone, Batteria (Drums) with Tambourine, Piano, Voce (Voice), V. Violini (Violins) numbered 1, 2, and 3, V. Cello, and C. Basso (Cello/Bass). The music is in 2/4 time and G major. The score shows a dynamic shift from piano (p) to fortissimo (pp) in the piano part. There are various musical notations including notes, rests, and articulation marks.