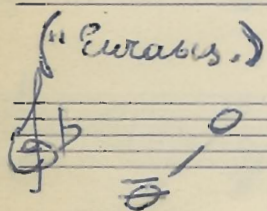


ΓΛΥΚΟ ΜΥ  
ΚΟΡΙΤΣΙ.

Tango

Πρωτότυπο  
Α. Β. Β. Β.



E.P.T.  
ΜΟΥΣΙΚΗ ΒΙΒΛΙΟΘΗΚΗ  
4534  
Αριθμ. Μητρώου 672-6270.  
Αριθμ. Σαντίλων 261 Μ.Μ.

- Violon I
- » II
- » III
- » IV

- Cello
- Basso
- Piano
- Guitare
- Floute
- Trampette es sib
- Clarinete es sib

ΓΛΥΚΟ ΜΥ ΚΟΡΙΤΣΙ.

Πρωταπόδη  
Αιρίων

Tango

MUTE

Handwritten musical score for a Tango piece titled "ΓΛΥΚΟ ΜΥ ΚΟΡΙΤΣΙ". The score is arranged in a grand staff format with the following instruments and parts:

- Trompette si b:** Treble clef, key signature of one sharp (F#), common time (C). Part 1: Quarter note G4, quarter note A4. Part 2: Quarter note B4, quarter note C5. Part 3: Quarter note D5, quarter note E5, quarter note F#5.
- Clarinete si b.:** Treble clef, key signature of one sharp (F#), common time (C). Part 1: Quarter note G4, quarter note A4, quarter note B4, quarter note C5. Part 2: Quarter note D5, quarter note E5, quarter note F#5, quarter note G5. Part 3: Quarter note A5, quarter note B5, quarter note C6, quarter note D6.
- Violon I:** Treble clef, key signature of one flat (Bb), common time (C). Part 1: Quarter note G4, quarter note A4, quarter note B4, quarter note C5. Part 2: Quarter note D5, quarter note E5, quarter note F#5, quarter note G5. Part 3: Quarter note A5, quarter note B5, quarter note C6, quarter note D6.
- Violon II:** Treble clef, key signature of one flat (Bb), common time (C). Part 1: Quarter note G4, quarter note A4, quarter note B4, quarter note C5. Part 2: Quarter note D5, quarter note E5, quarter note F#5, quarter note G5. Part 3: Quarter note A5, quarter note B5, quarter note C6, quarter note D6.
- Violon III:** Treble clef, key signature of one flat (Bb), common time (C). Part 1: Quarter note G4, quarter note A4, quarter note B4, quarter note C5. Part 2: Quarter note D5, quarter note E5, quarter note F#5, quarter note G5. Part 3: Quarter note A5, quarter note B5, quarter note C6, quarter note D6.
- Violon IV:** Treble clef, key signature of one flat (Bb), common time (C). Part 1: Quarter note G4, quarter note A4, quarter note B4, quarter note C5. Part 2: Quarter note D5, quarter note E5, quarter note F#5, quarter note G5. Part 3: Quarter note A5, quarter note B5, quarter note C6, quarter note D6.
- Cello:** Bass clef, key signature of one flat (Bb), common time (C). Part 1: Quarter note G3, quarter note A3, quarter note B3, quarter note C4. Part 2: Quarter note D4, quarter note E4, quarter note F#4, quarter note G4. Part 3: Quarter note A4, quarter note B4, quarter note C5, quarter note D5.
- Chaut:** Treble clef, key signature of one flat (Bb), common time (C). Part 1: Quarter note G4, quarter note A4, quarter note B4, quarter note C5. Part 2: Quarter note D5, quarter note E5, quarter note F#5, quarter note G5. Part 3: Quarter note A5, quarter note B5, quarter note C6, quarter note D6.
- Batterie:** Bass clef, key signature of one flat (Bb), common time (C). Part 1: Quarter note G3, quarter note A3, quarter note B3, quarter note C4. Part 2: Quarter note D4, quarter note E4, quarter note F#4, quarter note G4. Part 3: Quarter note A4, quarter note B4, quarter note C5, quarter note D5.
- Guitare:** Treble clef, key signature of one flat (Bb), common time (C). Part 1: Quarter note G4, quarter note A4, quarter note B4, quarter note C5. Part 2: Quarter note D5, quarter note E5, quarter note F#5, quarter note G5. Part 3: Quarter note A5, quarter note B5, quarter note C6, quarter note D6.
- Piano:** Treble clef, key signature of one flat (Bb), common time (C). Part 1: Quarter note G4, quarter note A4, quarter note B4, quarter note C5. Part 2: Quarter note D5, quarter note E5, quarter note F#5, quarter note G5. Part 3: Quarter note A5, quarter note B5, quarter note C6, quarter note D6.
- Basso:** Bass clef, key signature of one flat (Bb), common time (C). Part 1: Quarter note G3, quarter note A3, quarter note B3, quarter note C4. Part 2: Quarter note D4, quarter note E4, quarter note F#4, quarter note G4. Part 3: Quarter note A4, quarter note B4, quarter note C5, quarter note D5.

The score is divided into three measures. The first measure contains the initial notes for each instrument. The second measure continues the melodic lines. The third measure concludes the piece with a final chord and notes. The key signature is one flat (Bb) and the time signature is common time (C). The tempo is marked "Tango" and the dynamics are marked "MUTE".