

ΝΑ ΖΗ ΚΑΝΕΙΣ
 Η ΝΑ ΜΗ ΖΗ...!

Μυαυβλ
 Αιρική

Αζζιν
 Αιρική

Ρομπός Slow.

E. P. T.

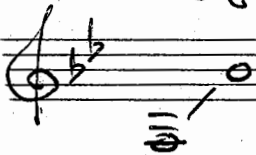
ΜΟΥΣΙΚΗ ΒΙΒΛΙΟΘΗΚΗ

4552

622 6070.

278 κ.κ. -

1. Eulawy (Alto)



Flut	
Oboe	
Trumpettes sib	I - II - III
Tizo	I - II
Sax. Alto	I - II
3 Tenor	II - IV
Vio Cons	I
3	II
3	III
3	IV
Cello	
Basso	
Guitare	
Batterie	
Piano	

- 1 -
N2 ZH KANEIZ H NA MH ZH ...!

Azzia
Hindi

Slow.

Flute
Hautlois

Sax I-III
Alto

Sax II
Tenor

Sax IV
Tenor

Trumpets
I-II

Trumpet
III

Trombone
I-II

Violins
I-II

Violas
III

Violins
III

Cello

Chant

Guitar

Double Bass

Piano

Bass

Detailed description: This is a handwritten musical score for a symphony orchestra and a vocal soloist. The score is written on 15 staves. The instruments listed on the left are: Flute/Hautlois, Saxophones I-III (Alto), Saxophone II (Tenor), Saxophone IV (Tenor), Trumpets I-II, Trumpet III, Trombone I-II, Violins I-II, Viola III, Violin III, Cello, Chant (voice), Guitar, Double Bass, Piano, and Bass. The music is in common time (C) and begins with a key signature of one flat (B-flat). The tempo is marked 'Slow.'. The score is divided into four measures. The first measure contains rests for most instruments. The second measure features a melodic line for the saxophones and trumpets, with dynamic markings like 'f' and accents. The third measure continues this melodic development. The fourth measure concludes with a final chord and rests. The notation includes various musical symbols such as notes, rests, beams, slurs, and dynamic markings.